



Amazing solutions.

Raw Materials | Machining Factory | Professional Design Team | Strict Quality Control | Experience in project contracting



EBCHR cooling bed



Electrode Holder



SAF Contact shoes  
Pressure ring



Crystallizer & crucible



Copper Chute



## Luoyang Hengzheng Copper Co.,Ltd

*Address: Jinyuan Mansion C, Room 507, 38#Taiyuan Road, Jianxi District, Luoyang City, China 471003*

*Tel: +86-0379-64391187 | Fax: +86-0379-64390787*

*Email: info@lyhengzheng.com | sunji0407@126.com*

*Chinese: www.lyhengzheng.com*

*English: www.copper-manufacture.com*

*Русский: www.hzc-solutions.ru*



## Monocrystalline and polycrystalline silicon copper electrode elements



Monocrystalline and polycrystalline silicon copper electrode elements



Water cooling cable



Polycrystalline silicon reduction water cooling furnace electrode



Polycrystalline silicon Hydrogenated furnace water cooling electrode



Polysilicon ingot furnace copper electrode

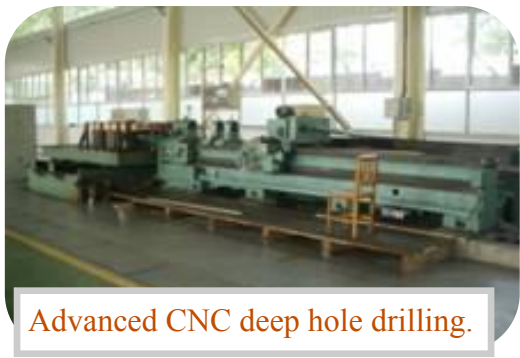
**1.Raw material:** High quality copper slab from CHINALCO Luoyang Copper.

**Largest hot rolling mill:** Adopting German-made reversible cold & hot rolling mill, the largest production facility in non-ferrous metals industry in China, capable of producing copper slab: thickness 3-150mm, max. width 3.2m, weight 7.5t/pcs, capacity 20,000t/y.



**Wide plate mill**

**2. Advanced updated machining equipment and process**



**Advanced CNC deep hole drilling.**



**boring miller**



**slot milling machine**

**3. Experienced in welding.**

All welders have qualified as per DIN EN 287—3, certified by WTI/SLV Duisburg GmbH.  
HZC also have the SGS welding certificate



**Welding Procedure Specification (WPS)**

Company name: China Hengzheng		Identification: WPS L1402-001
Welding process: TIG (MIG)	Equipment No: 134	Revision No: 01
Welding Code: WPS/L1402-001	Manual: Manual	Date: 01-Apr-13
		Issue: 01
<b>Welding Procedure Specification (WPS)</b> Welding process: TIG (MIG) Equipment No: 134 Manual: Manual Date: 01-Apr-13 Issue: 01		
<b>Welding Procedure Specification (WPS)</b> Welding process: TIG (MIG) Equipment No: 134 Manual: Manual Date: 01-Apr-13 Issue: 01	<b>Welding Procedure Specification (WPS)</b> Welding process: TIG (MIG) Equipment No: 134 Manual: Manual Date: 01-Apr-13 Issue: 01	<b>Welding Procedure Specification (WPS)</b> Welding process: TIG (MIG) Equipment No: 134 Manual: Manual Date: 01-Apr-13 Issue: 01

## 4. Quality Test



pull-out test



Ultrasonic Testing



Ultrasonic Testing



Dye-penetrant inspection



Dye-penetrant inspection



Endoscopic detection channel

## 5. Site inspection Customers



Italy customers

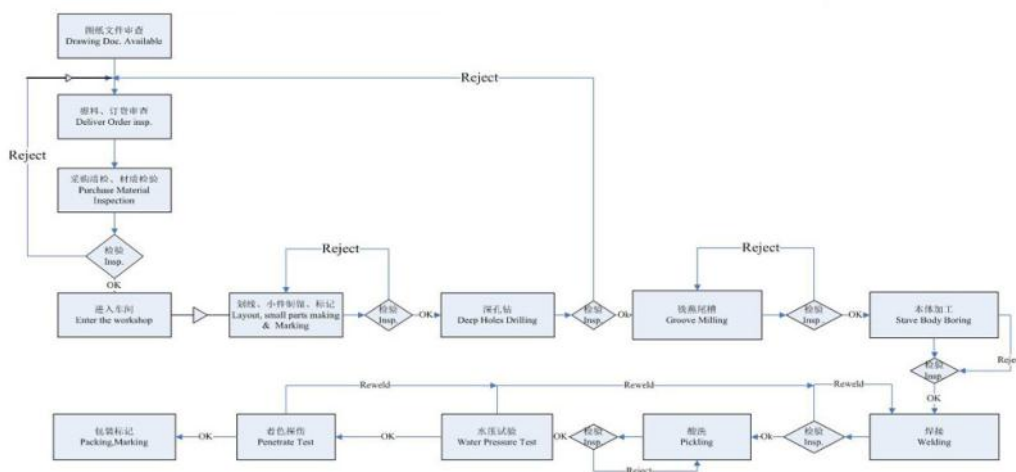


CNGPC IVR Test setup



French customers

## 6. Production process of copper cooler stave and cooling jacket



Hengzheng Copper Ltd

Jinyuan Mansion C, 507, 38#Taiyuan Road  
Luoyang City, C 471003  
China

+ 86 379 64391187 Tel  
+ 86 379 64390787 Fax

info@lyhengzheng.com  
www.lyhengzheng.com  
www.copper-manufacture.com



**Hi-Q material** : using high quality copper materials from Luoyang Copper, which has steady source channel and competitive price. Have various sources in complex copper alloys supplies, such as Cr-Cu, Cu-Cr-Zr, bronze, cupronickel etc. We can also customize complex brands copper casting pieces with advantage-raw material: hot rolled wide thick copper slabs produced by Chinalco Luoyang copper; unique brand of TU1/TU2/TAG0.1/T2/TP2; other brands include brass, bronze and cupronickel alloys. The max thickness 140mm, the max depth 3000mm, the max length 6000mm. The max length of the cutting copper bar can reach 12m. The ingots are reliable and of steady supply, casted from cathode copper. Copper tube and bar: the max diameter is 420 mm, the biggest wall thickness 80 mm of the extrusion tube; the max diameter is 360 mm, the biggest wall thickness 10 mm of the drawn tube; the max diameter is 300 mm of extruding bar and the diameter is 180 mm of the drawn bar.

### **Technical support:**

- a. Experienced senior technical personals in the industry;
- b. Solving puzzling questions professionally comprehensively and response speedily;
- c. Rich experiences in Optimization of the drawings and drawing inversion of products;
- d. Explore new convenient machining process and well know the manufacturing and machining process.

Adopt the most advanced melting & casting equipment and process, advanced CNC equipments. Experienced in welding. All welders have been qualified as per DIN EN 287—3, certified by WTI/SLV Duisburg GmbH.

Site inspection, the quality of the products get consistent high praise of clients.

Perfect, advanced quality assurance system, including raw material control, process inspection, final inspection and test etc. Reliability, innovation and development, providing the best quality products and services to every client.



#### **Hengzheng Copper Ltd**

Jinyuan Mansion C, 507, 38#Taiyuan  
Road Luoyang City, C 471003  
China

+ 86 379 64391187 Tel  
+ 86 379 64390787 Fax

info@lyhengzheng.com  
www.lyhengzheng.com  
www.copper-manufacture.com



## DESIGNING

We have fully equipped Design & Drawing office with AutoCAD & printing facilities. A team of Engineers/Draftsman manages the Designing & Drawing unit. We also undertake the design of complete system for projects.

## MANUFACTURING

We have complete manufacturing / Fabrication & testing facilities for all our products as Contact clamps, cooling elements, water cooled cable etc. Our workshop comprises of pneumatic hammers, cold/hot rolling machines, Heating/Annealing furnaces, planning machines, shaping machines, Lathe machines, Drill machines, hydraulic presses, TIG & MIG WELDING facilities.

## ERECTION & COMMISSIONING

We have team of Engineers & skilled manpower to carry out Erection & Commissioning at Customers site

For more information on Luoyang Hengzheng Copper Co.,Ltd call us at +86 379 64391187 or email us at [info@lyhengzheng.com](mailto:info@lyhengzheng.com).



### Hengzheng Copper Ltd

Jinyuan Mansion C, 507, 38#Taiyuan  
Road Luoyang City, C 471003  
China

+ 86 379 64391187 Tel  
+ 86 379 64390787 Fax

[info@lyhengzheng.com](mailto:info@lyhengzheng.com)  
[www.lyhengzheng.com](http://www.lyhengzheng.com)  
[www.copper-manufacture.com](http://www.copper-manufacture.com)

